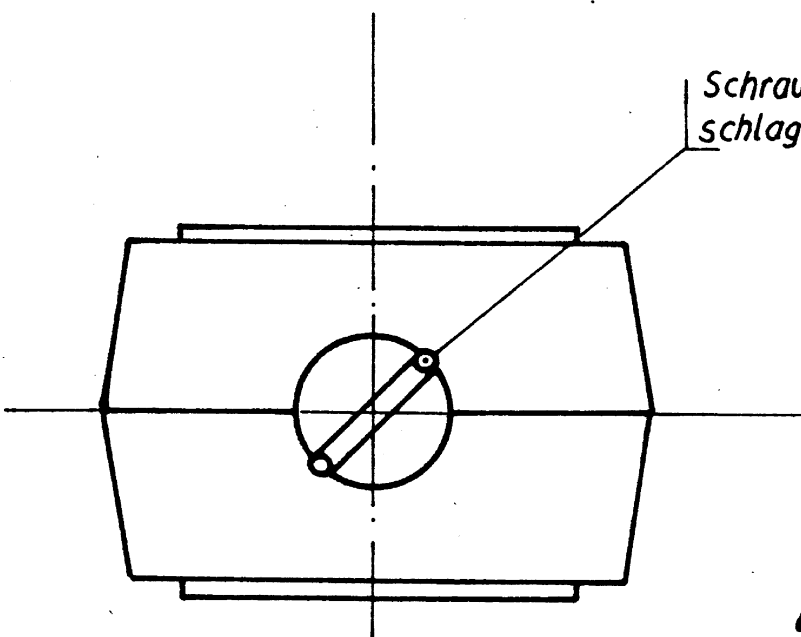


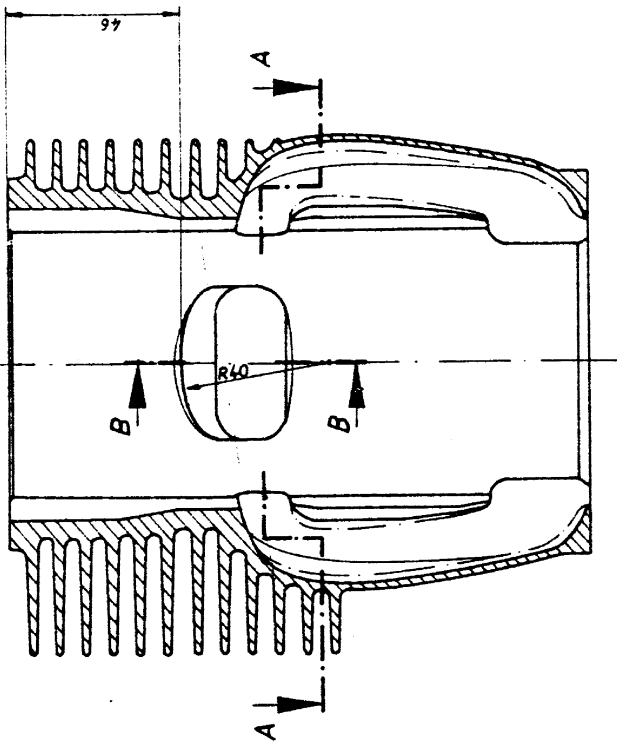
BM 5-8 TGL 5683-5S  
Schraube bei Einbau soweit  
gekürzt, daß der Kolben-  
bolzen nicht klemmt.



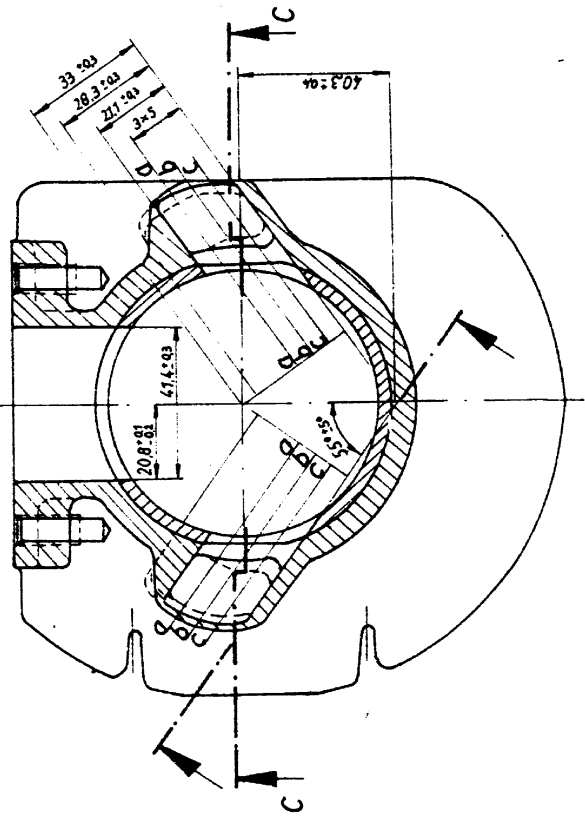
Schraube durch Körner-  
schlag gesichert.

**Abb. 2**

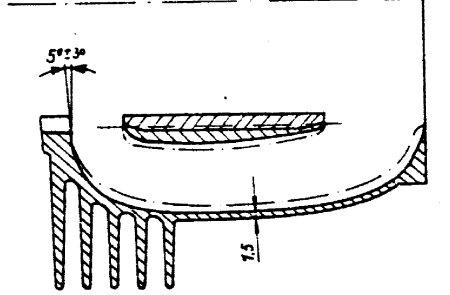
Schnitt C-C



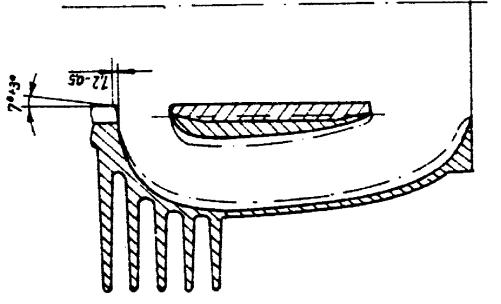
Schnitt A-A



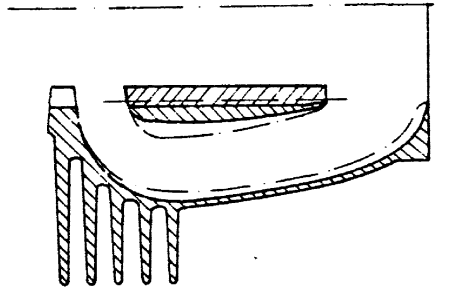
Schnitt D-D



Schnitt b-b



Schnitt C-C



Schnitt B-B

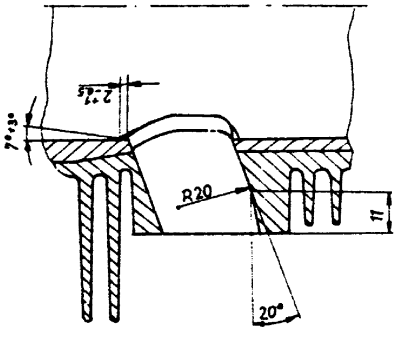


Abb. 3

Schnitt D-D

Schnitt b-b

Schnitt C-C

Schnitt B-B

Seriesausführung

Schnitt A-A

Schnitt B-B

$\sim (\nabla \nabla R_f 60 \dots 130)$  um  $90^\circ$  gedreht gezeichnet

Tgl. 39-783

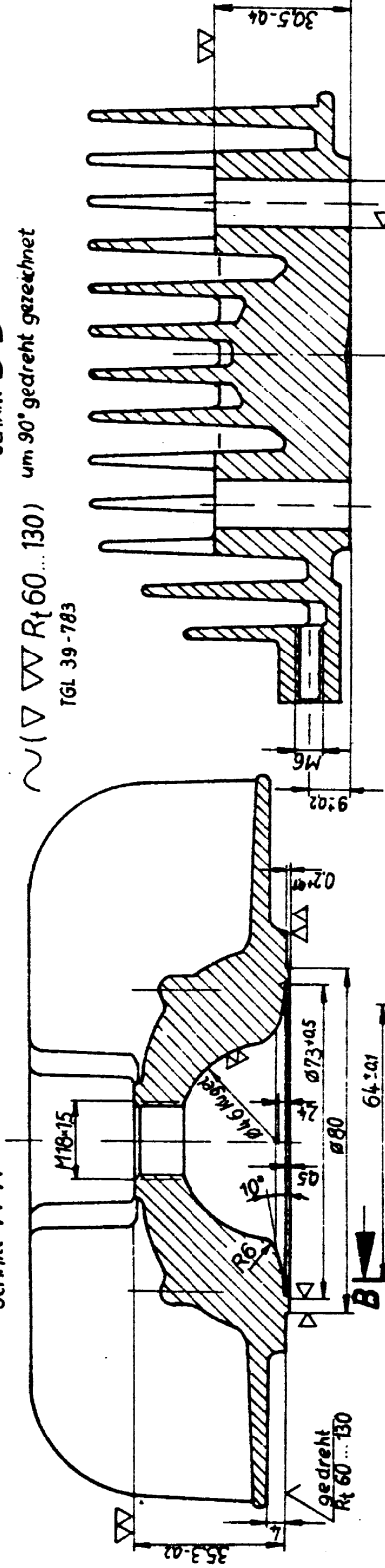
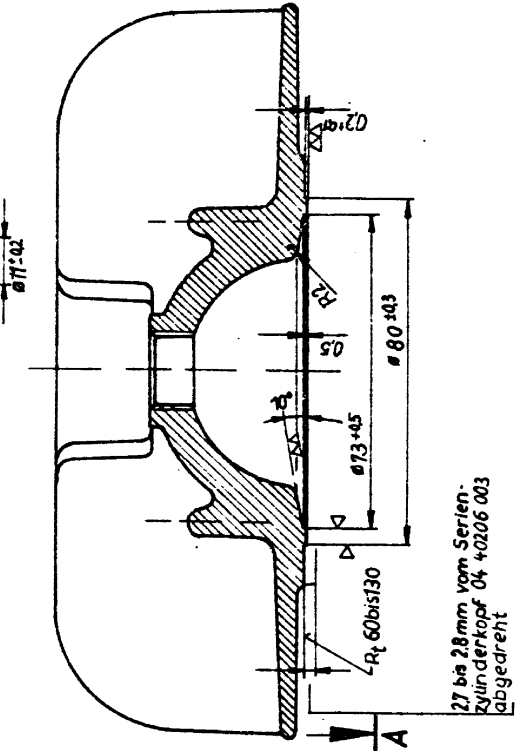


Abb. 4



27 bis 28mm vom Serien-  
Zylinderkopf 04 + 0206 003  
abgedreht

Abb. 5

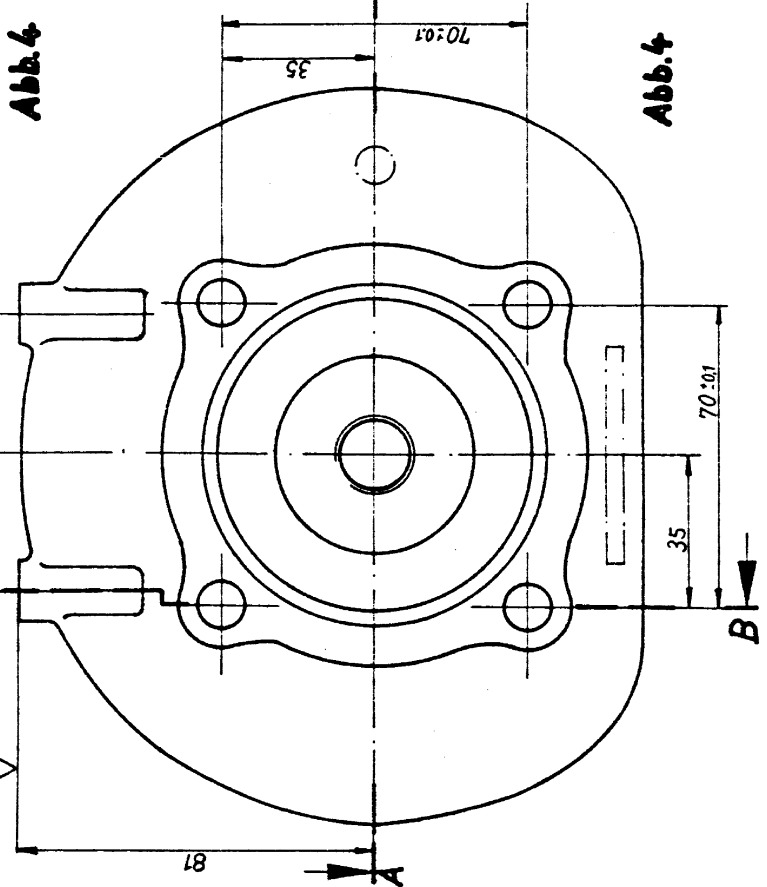
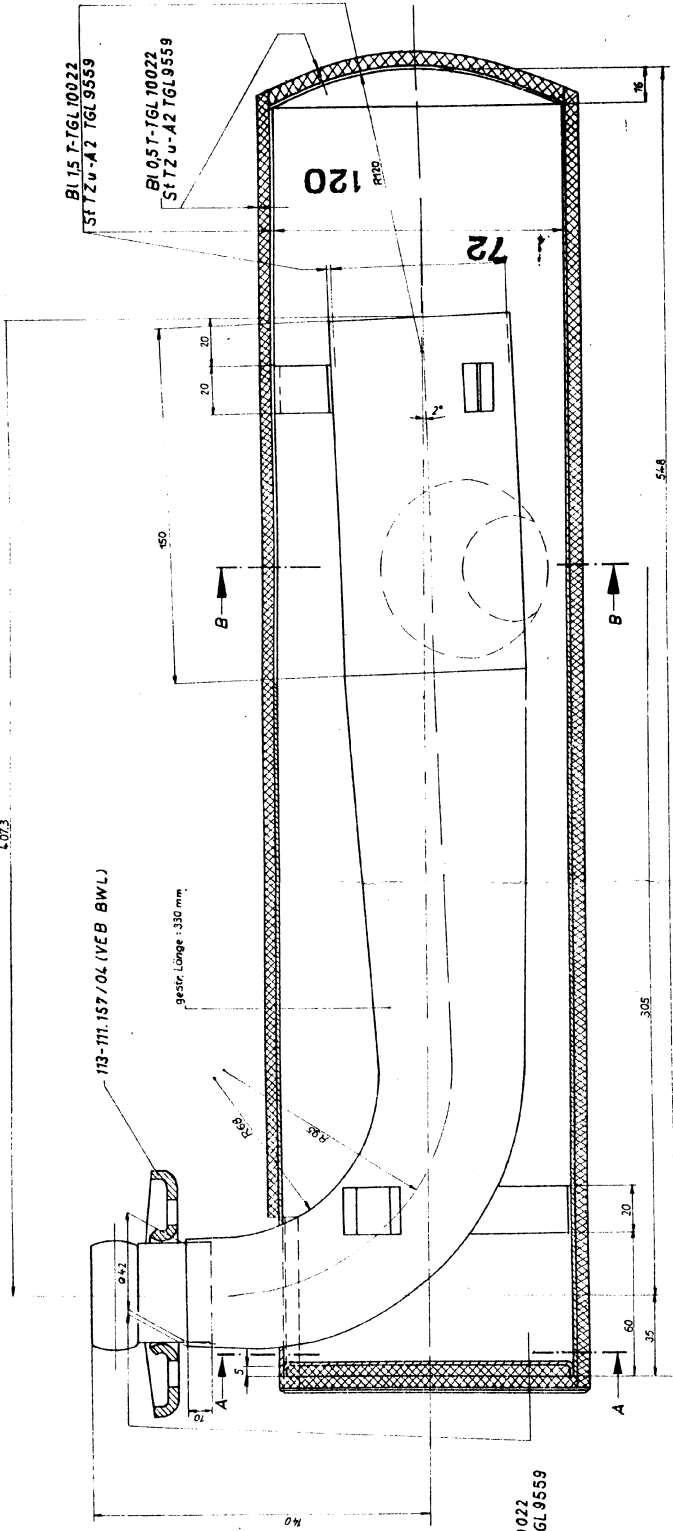
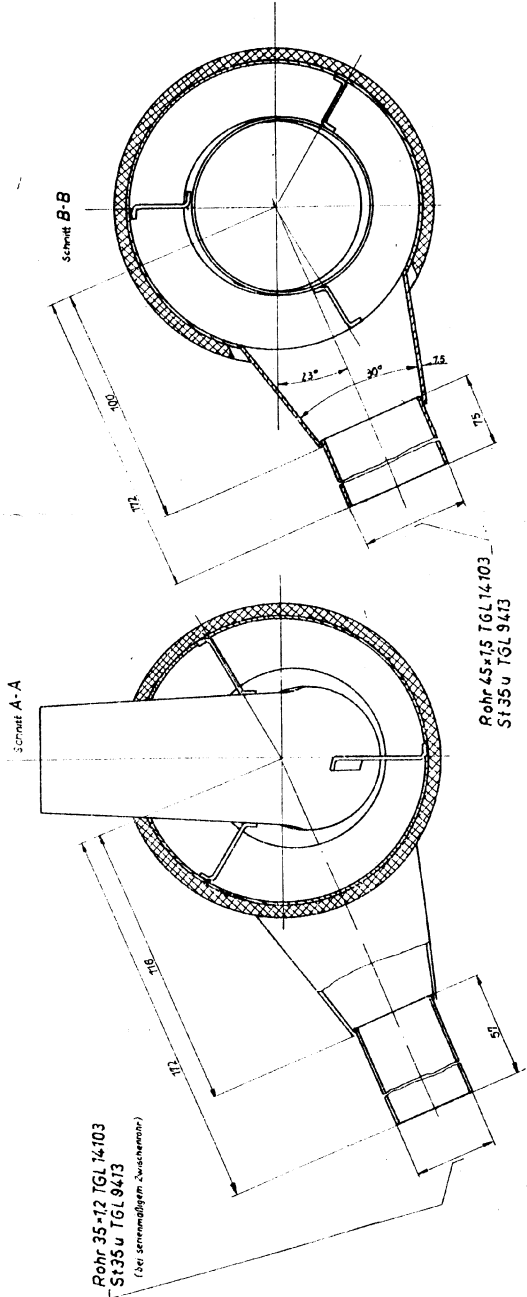
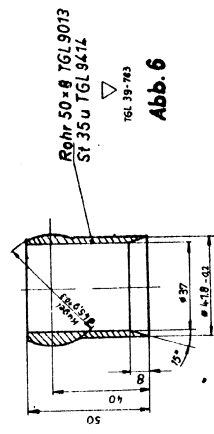


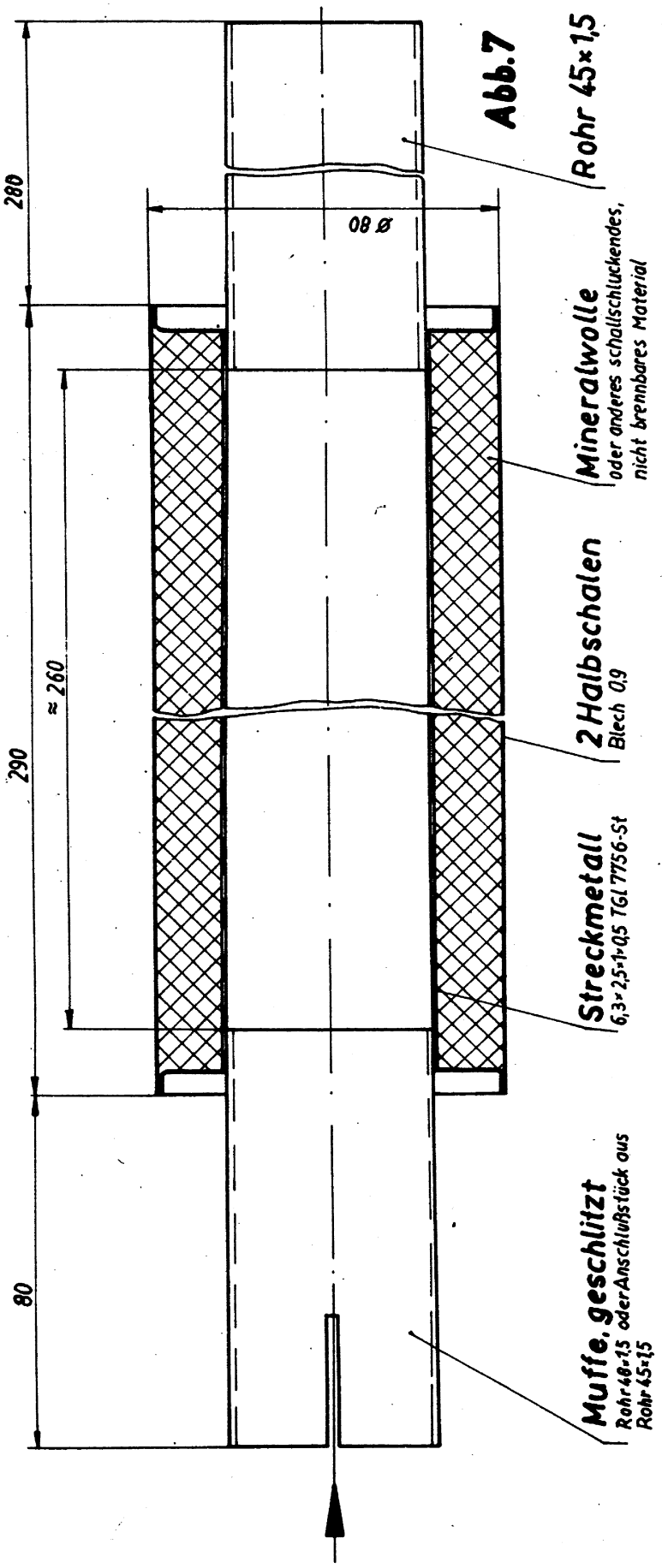
Abb. 4

45%



BI 157-TGL 10022  
St T zu-A2 TGL 9559





**Abb. 7**